



CHINA-HWAMDA
 THE CRAFTSMANSHIP OF THE WORLD
 中国的华美达,世界的工匠心

MPS 系列

手机行业专用注塑机

PLASTIC INJECTION MOLDING MACHINE
 FOR MOBILE PHONE



2025年3月修订

宁波华美达集团有限公司
 NINGBO HWAMDA GROUP CO., LTD.

地址: 浙江省宁波市小港安居路368号
 Add: Anju Road No.368, Xiao Gang Street,
 Ningbo, Zhejiang, P.R. China
 邮编 (P.C.) : 315801
 Http://www.hwamda.com

国内销售
 电话: 0574-86175111
 0574-86176676
 传真: 0574-86176890
 邮箱: info@hwamda.com

International
 Tel: 86-574-86176630
 86-574-86228735
 Fax: 86-574-86228918
 E-mail: sales@hwamda.com



宁波华美达集团有限公司
 NINGBO HWAMDA GROUP CO., LTD.



宁波华美达机械制造有限公司地处“中国塑机之都”的浙江省宁波市，是一家专业化生产塑料注射成型机械的高新技术企业，经过不断的技术创新，公司自主研发的系列产品已广泛应用于汽车、电子、医疗、环保、物流、包装等众多注塑生产行业，目前，华美达已经成长为具有雄厚规模实力和竞争能力的中国注塑机行业前列企业。2021年，成立宁波华美达集团有限公司，以集团化经营服务全球客户。

华美达公司现有四大生产制造基地，超过三十万平方米厂房设施，引进各种大型先进精密加工设备，团结了一支高素质的企业管理与技术创新团队。公司一直致力于高效节能型注塑机的开发制造与市场推广，已成功推出有精密伺服注塑机、二板注塑机、全电动注塑机、高速精密注塑机、高性能注塑机、清混多色注塑机、PET专用快速注胚系统等多个系列以及各种行业专用型产品。

为贴近客户，公司大力开拓国际市场，在国内外建立60余处完善的销售机构及海外服务中心，华美达注塑机受到了北美、中东、南美、东南亚、欧洲及非洲等各个国家和地区客户的使用和欢迎，建立了面向国际市场的营销体系。

公司通过ISO9001、ISO14001、OHSAS18001管理体系认证以及CE、EAC、KCS和“一带一路”等国际认证，所生产的各系列注塑机均配备世界知名品牌的液压、电器及控制系统，引进国际领先设计理念，通过严格的检验、加工、装配、调试，为客户提供优质的产品与服务。

一流的品质，是华美达执着追求的重要目标。尽力满足顾客需求，以精益求精、开拓进取的企业精神缔造辉煌的未
来，公司始终坚持“专心专注，做好塑机”的企业理念，为中国注塑机械产业的发展和提高做出自己的贡献。

关于华美达 About US



华美达高速精密注塑机智能装备基地 (104.5亩)

腾华年产一万台精密节能注塑机产业园 (326.5亩)

Ningbo Hwamda Machinery Manufacturing Co., Ltd. is a new and high technology enterprise devoted to manufacture plastic injection machine, lying in the "City of China plastic molding machine" - Ningbo, Zhejiang.

Now, Hwamda Company owns four factories with more than three hundred thousand square meters. There are over 700 workers and staff members, holding together a high-quality team of managers and technical team. Our company always devoted to R&D for high efficiency and energy-saving injection molding machine. At present, our main products including servo motor energy saving machines, two platen machines, full electric machines, high speed machine for thin-wall products, twin-color machines, special high speed machine for PET preform and other standard or special injection molding machines.

Following the idea of serving customers, we have established more than 60 perfect sales & service branch in China and abroad. Hwamda machine has sold to many countries such as Russia, Poland, Mexico, India, Sri Lanka, Egypt, Brazil, Peru, Colombia, etc. Hwamda has gradually set up a marketing system covering both the domestic and overseas markets.

Hwamda has passed the ISO9001, ISO14001, OHSAS18001 and CE, EAC, KCS certification. All the series of injection machine are equipped with world famous hydraulic & electric elements and control system. Through strict inspection, assembly and test, Hwamda has provided first-class products and services to customers.

"First-class quality" is what we are pursuing the most. We will try our best to meet the requirements of customers and create even better future. Our company firmly sticks to the idea of "With undivided attention to manufacture excellent plastic injection molding machines", and makes our own contribution for the development and improvement of national plastic industry.



MPS

PLASTIC INJECTION MOLDING MACHINE
FOR MOBILE PHONE

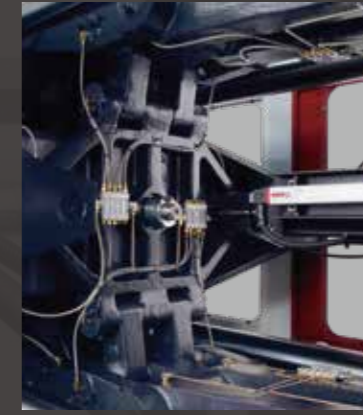


HYDRAULIC UNIT 液压单元

采用全数字闭环控制，精度高，压力可精确到0.3bar，流量稳定，尤其在低流量时优势更加明显。采用永磁同步伺服电机和专用伺服驱动器，响应速度快，在0~最大流量时响应时间仅需60ms，0~最大压力时约为100ms。

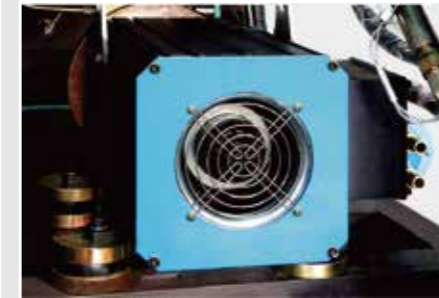
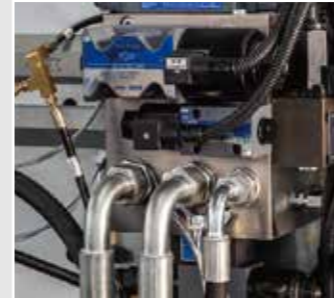
The servo motor and energy machine adopt fully digital closed loop control, and the pressure can accurate to 0.3bar, with high precision and stable flow, especially under low flow rate. Adopt permanent magnet synchronous motor and motor drive with high response. From 0~maximum flow rate, it only needs 60ms, and from 0~maximun pressure needs about 100ms.

MPS



全新设计合模部分，设计时引入电脑仿真优化技术，并且对所有部件进行有限元分析优化应力及变形量，使锁模机构具有运动平稳、快速、强度高、应力小、刚性好等优点。

New designed clamping unit, digital simulation-based optimization is applied in designation. The stress and deformation of all components were optimized by finite element analysis, leading to clamping unit with the advantages of stable movement, fast movement, high strength, low stress and excellent rigidity.



CLAMPING UNIT 合模单元

注射单元 INJECTION UNIT

手机外壳/保护套

MOBILE PHONE SHELL / PHONE COVER

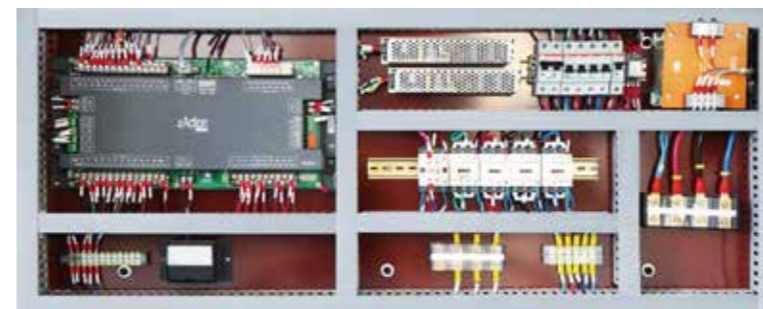


精密注塑机专用电脑，控制方式CAN通讯，响应速度快，控制精度高，缩短生产周期。

Utilize special program and CAN communication mode, which offers quick response, accurate control and short cycle time.



ELECTRIC UNIT 电控单元



双缸射胶系统，配合斜排双射移油缸，确保射胶动作平稳。采用线性导轨设计，使注射和储料时阻力更低并且受力均匀，注射动作和储料背压反应更加灵敏，具有更高的注射精度。

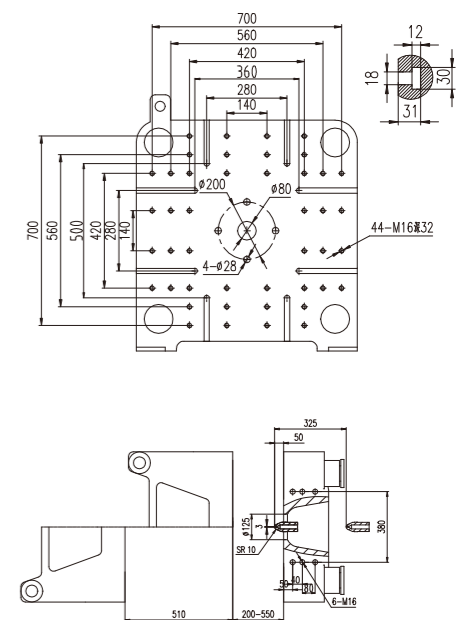
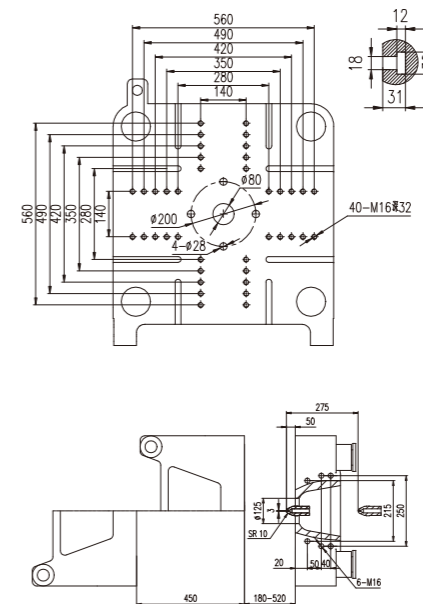
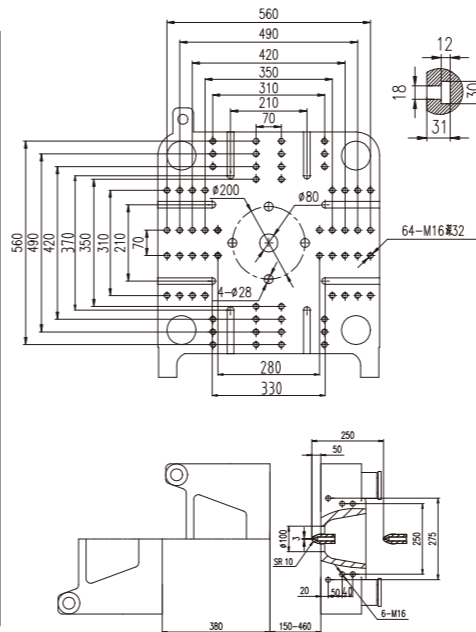
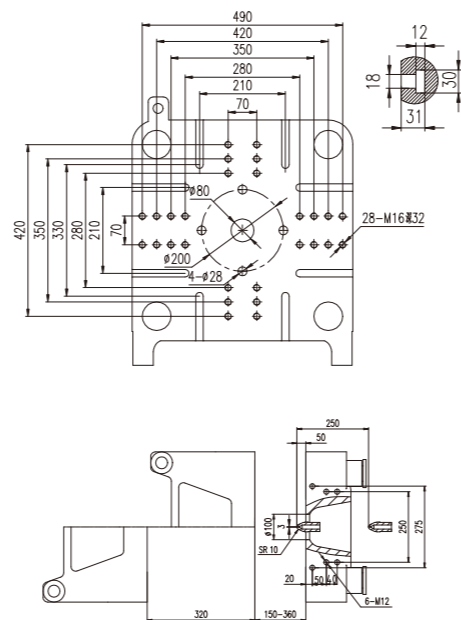
Double-cylinder injection system and double carriage cylinder, to make sure the injection movement stable and smoothly. Equipped with guide liner design, with lower resistance. Injection and charge back pressure more fast, with high injection precision.



技术参数表 SPECIFICATIONS

参数	PARAMETER	UNIT	HMD90MPS		HMD130MPS		HMD170MPS		HMD218MPS	
国际公认型号	International size rating	—	281/90		405/130		510/170		876/218	
注射装置	INJECTION UNIT									
理论注射容量	Injection volume(theoretical)	cm ³	85	106	125	153	161	203	272	332
注射重量 (PS)	Injection weight(PS)	g (克)	77	96	114	139	146	185	248	303
		oz (盎司)	2.7	3.4	4.0	4.9	5.2	6.5	8.7	10.7
注射速率 (PS)	Injection rate(PS)	g/s	65	81	83	100	83	106	114	139
螺杆直径	Screw diameter	mm	26	29	29	32	32	36	38	42
注射压力	Injection pressure	MPa	331	266	324	266	318	252	322	264
螺杆长径比	Screw L/D ratio	—	22:1	19.8:1	22:1	20:1	22:1	19.5:1	22:1	20:1
螺杆行程	Screw stroke	mm	160		190		200		240	
螺杆转速	Screw speed	r/ min	0 ~ 300		0 ~ 300		0 ~ 244		0 ~ 230	
合模装置	CLAMPING UNIT									
锁模力	Clamping force	kN	900		1300		1700		2180	
移模行程	Mold opening stroke	mm	320		380		450		510	
模板尺寸	Platen size	mm	535×535		630×610		710×690		780×780	
拉杆内间距	Dist. between tie bars (H × V)	mm	360×360		430×410		480×460		530×530	
模板最大距离	Max.daylight	mm	680		840		970		1060	
容量量 (最小—最大)	Mold thickness(Min—Max)	mm	150 ~ 360		150 ~ 460		180 ~ 520		200 ~ 550	
顶出行程	Ejector stroke	mm	100		125		140		140	
顶出力	Ejector tonnage	kN	31		42		50		50	
动力/电热	POWER UNIT									
油压系统压力	Hydraulic system pressure	MPa	16		16		16		17.5	
油泵马达	Pump motor power	kW	17		21		25		31	
电热功率	Heater power	kW	5.7		6.4		8.3		12.3	
温度控制区数	Number of temp control zones	—	4		4		4		5	
其它	OTHERS									
油箱容积	Oil tank	L (升)	125		135		170		270	
外形尺寸 (L x W x H)	Machine dimension (L x W x H)	m	4.0×1.2×1.9		4.5×1.4×1.9		4.9×1.4×2.1		5.5×1.6×2.1	
机器重量	Machine weight	Ton	3.5		4		5		7	

模板尺寸 PLATEN DIMENSION



说明：由于产品改进，技术参数的变更，恕不另行通知。

Remark: We reserve the right to make any technical improvement without prior notice.